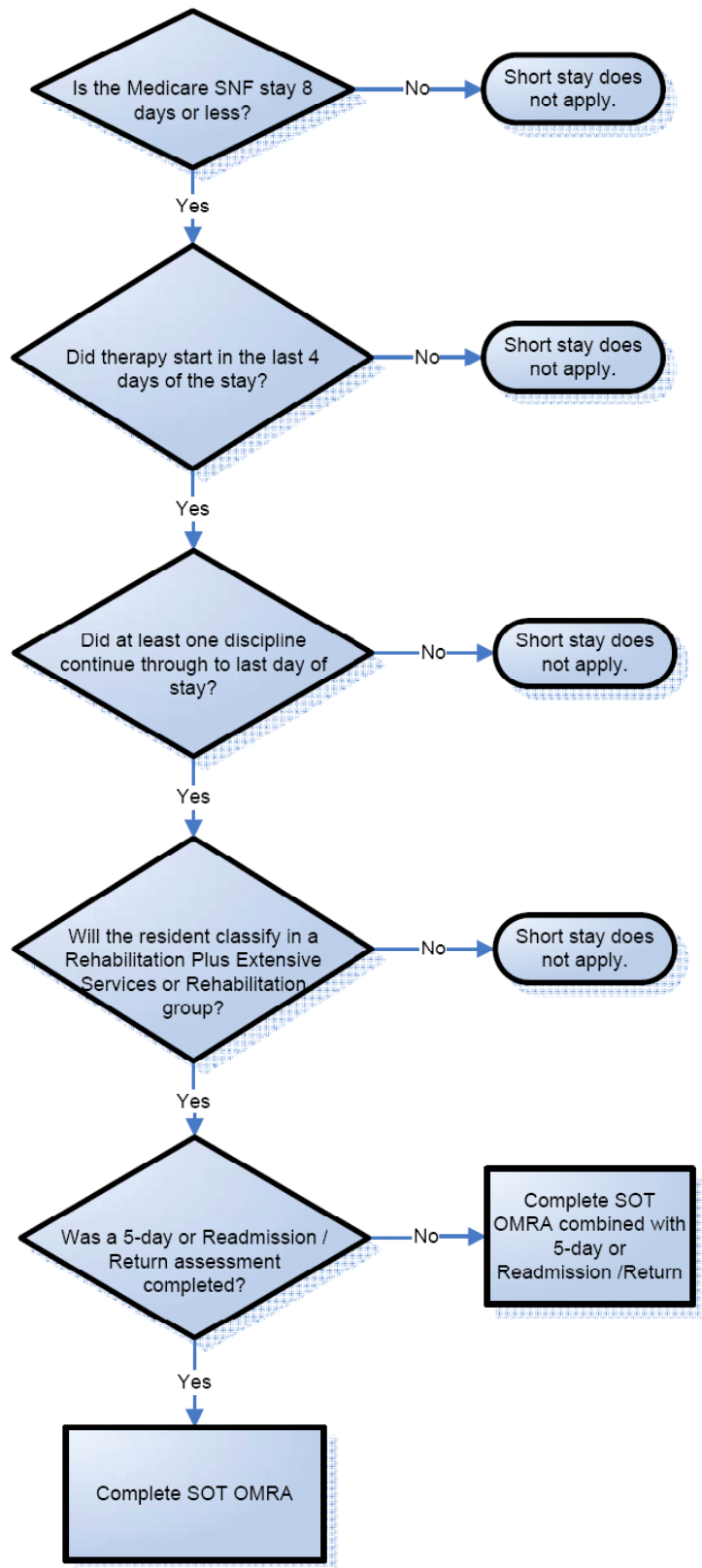


Medicare Short Stay Assessment Algorithm


Medicare Short Stay Assessment Requirements:
 All 8 must be true
Assessment Requirements:

1. Must be SOT OMRA
2. 5-day or readmission/return assessment must be completed (may be combined with the SOT OMRA)

ARD Requirements:

3. Must be Day 8 or earlier of Part A stay
4. Must be last day of Part A stay (see Item 2400 instructions)
5. Must be no more than 3 days after the start of therapy

Rehabilitation Requirements:

6. Must have started in last 4 days of Part A stay
7. Must continue through last day of Part A stay

RUG Requirement:

8. Must classify resident into a Rehabilitation Plus Extensive Services or Rehabilitation group

Note: When the earliest start of therapy is 1st day of stay, then the Part A stay must be 4 days or less